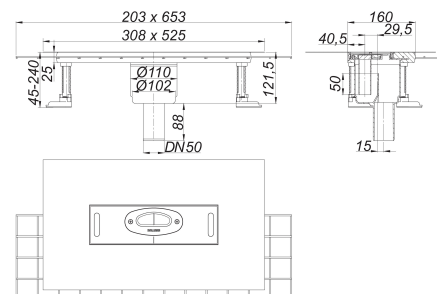
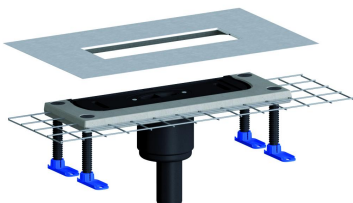


Drain body CeraFlex vertical, DN 50

Part number: 537164
 GTIN: 4001636537164
 Rebate group: 11



Description:

Drain body CeraFlex vertical, DN 50
 Conforming to DIN EN 1253
 For installation with shower channels CeraFloor, CeraWall, CeraFrame, Zentrix and CeraNiveau.
 Outlet DN 50 vertical

Specification:

- polymer concrete collar with steel mesh reinforcement
- flexible sealing collar for secure bonding of under-tile waterproofing
- accessories for sound insulated installation
- sound absorbing and height adjustable levelling legs
- removable trap insert with 50 mm water seal
- temporary blanking plate

Material:

Drain body polypropylene

Spare parts:

539144 sealing collar DallFlex

539328 trap insert DallFlex vertical